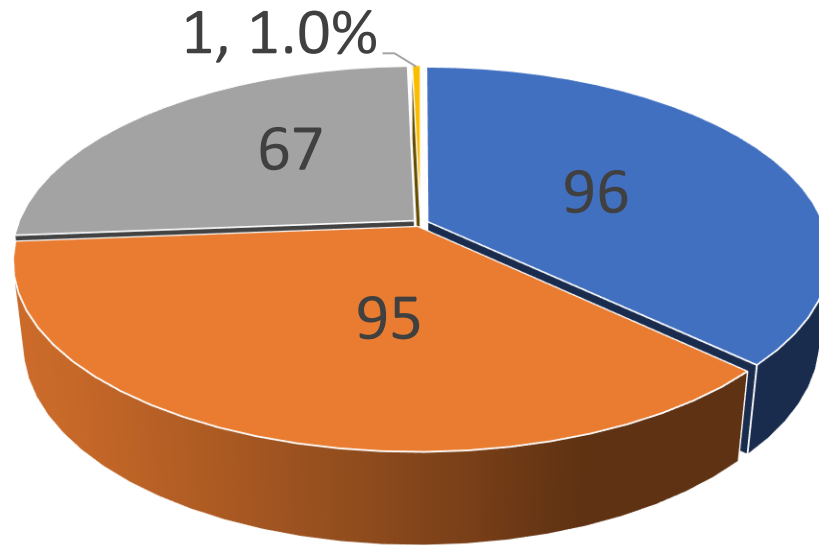




Town/Village of Chester

May 2025

Town/Village of Chester
May 2025



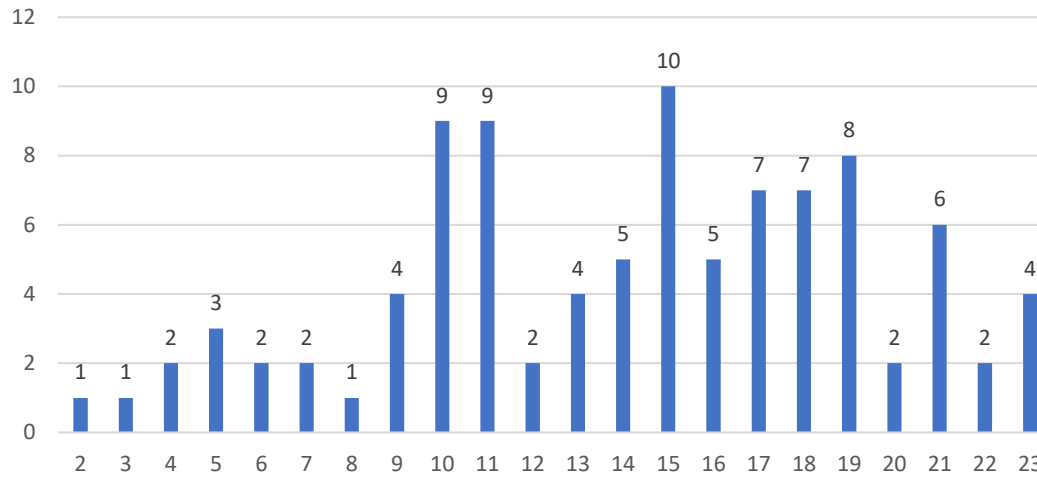
■ Total Dispatches

■ Total Responses

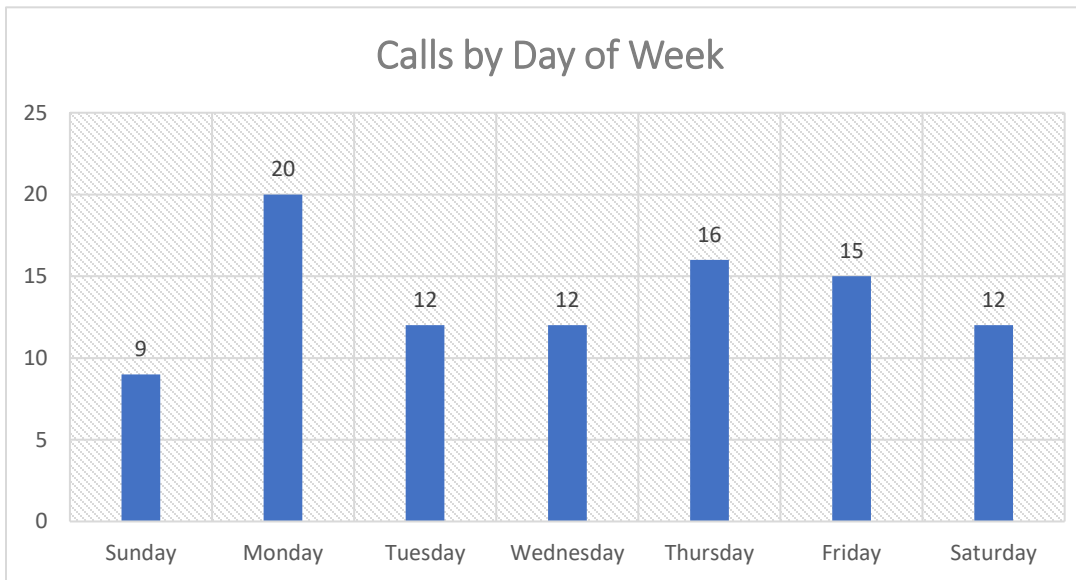
■ Transports

■ No Unit Available

Calls by Time of Day



Calls by Day of Week



Dedicated Chester Unit

Row Labels	Average of Response Time
N-CHM1	0:08:23
Grand Total	0:08:23
Row Labels	Average of Response Time
Sunday	0:07:03
Monday	0:08:15
Tuesday	0:08:10
Wednesday	0:08:13
Thursday	0:09:16
Friday	0:08:44
Saturday	0:08:31
Grand Total	0:08:23

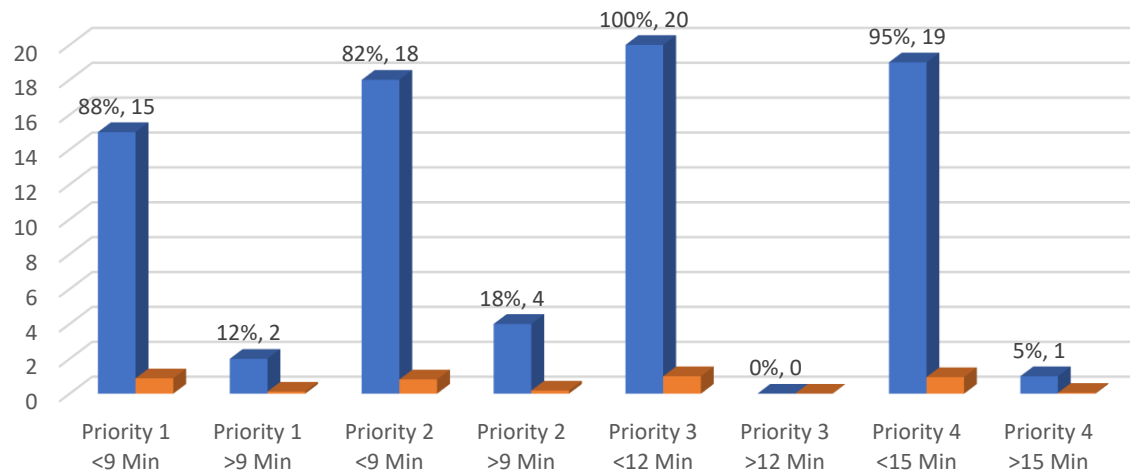
Additional Empress Units

Row Labels	Average of Response Time
N-M760	0:15:25
N-A705	0:20:05
N-M761	0:15:57
N-A710	0:17:13
N-A704	0:14:23
N-M764	0:10:57
357	0:24:52
355	0:08:33
Grand Total	0:14:29

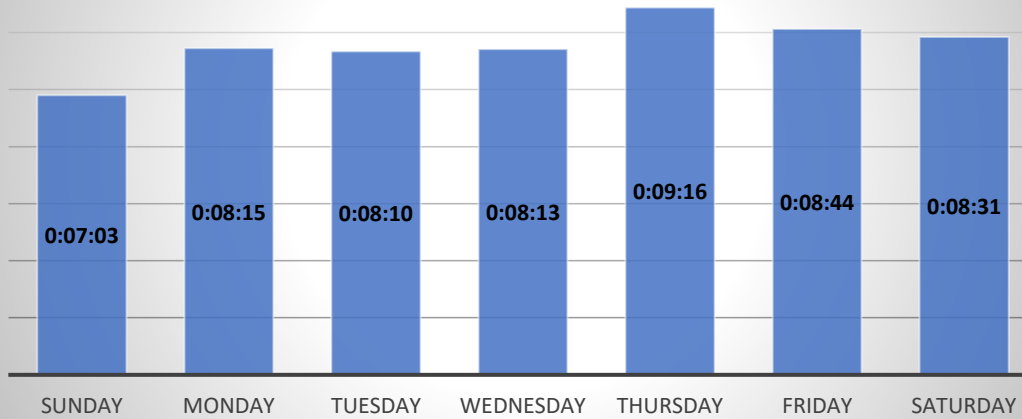
Total All Units

Row Labels	Average of Response Time
Sunday	0:07:03
Monday	0:10:21
Tuesday	0:08:55
Wednesday	0:10:48
Thursday	0:10:15
Friday	0:08:43
Saturday	0:08:31
Grand Total	0:09:28

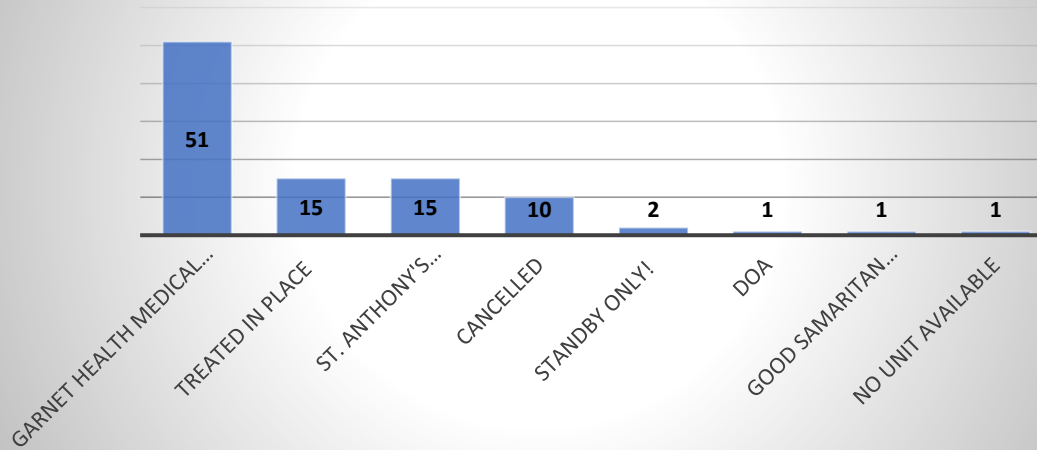
Response by Priority



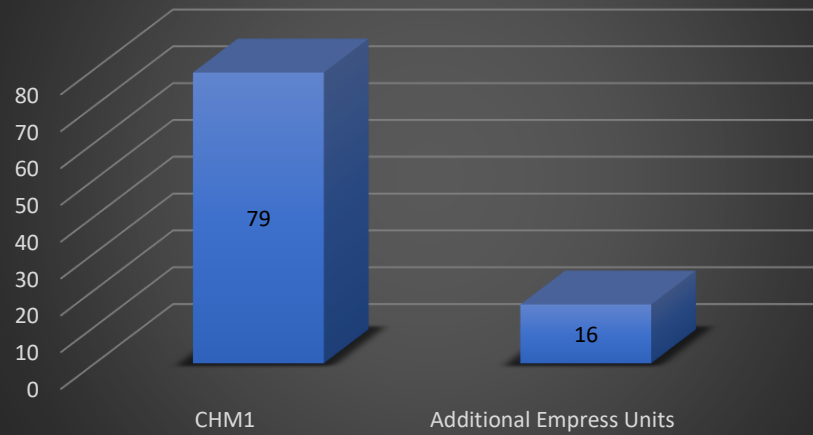
AVG Response Time by Day of Week



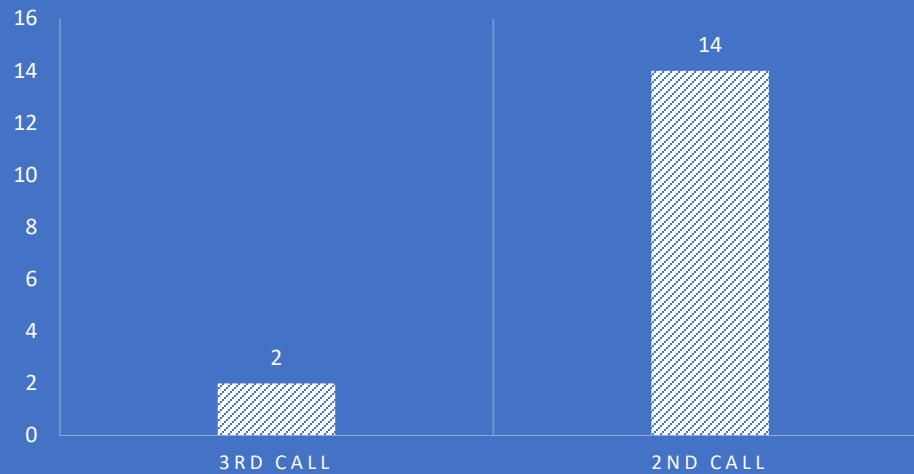
Count of Calls by Disposition



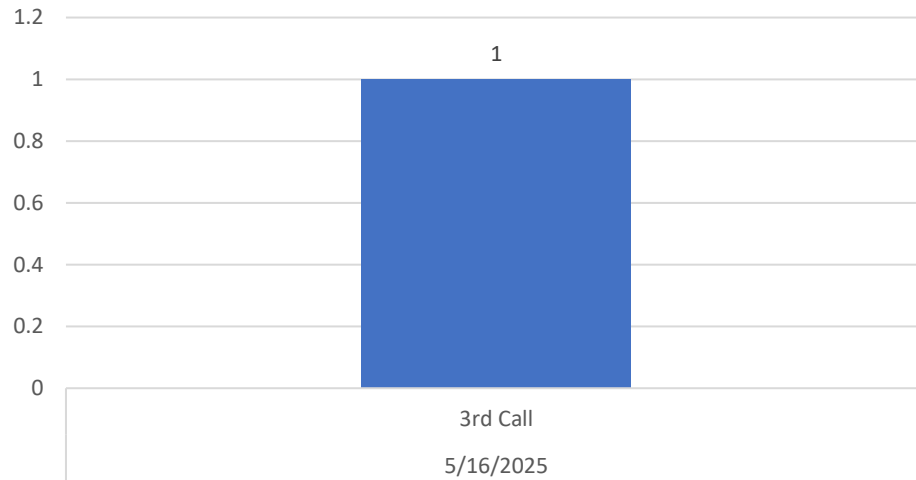
Call Volume by Unit



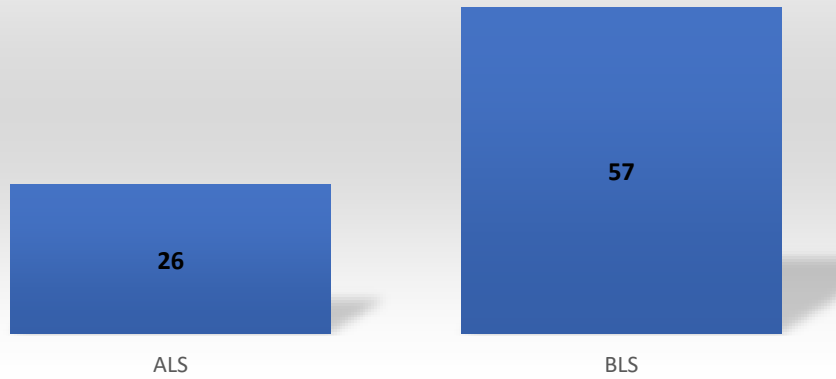
ADDITIONAL UNIT REASON



No Unit Available - Mutual Aid In



Level of Service ALS 31% BLS 69%



NATURE OF CALL

