

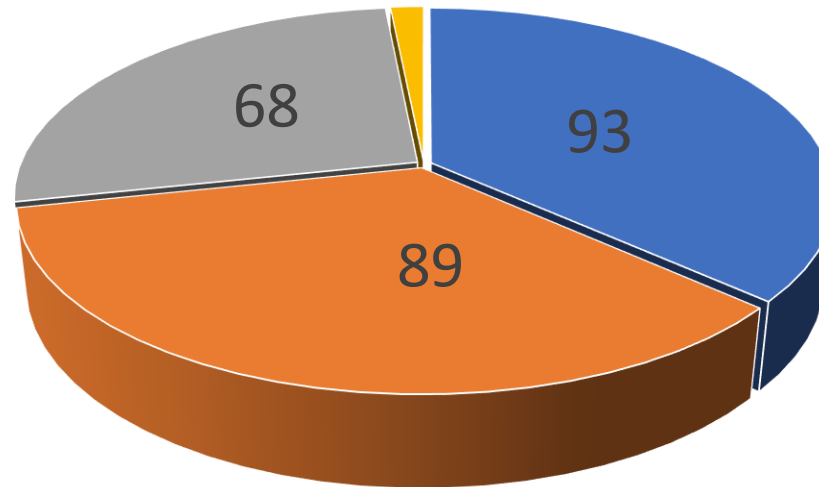


# Town/Village of Chester

## June 2025

Town/Village of Chester  
June 2025

4, 4.3%



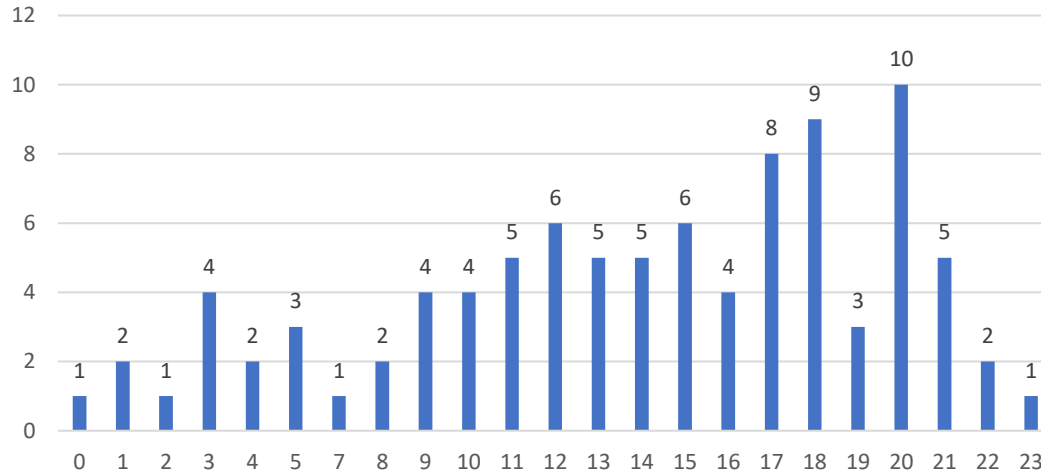
■ Total Dispatches

■ Total Responses

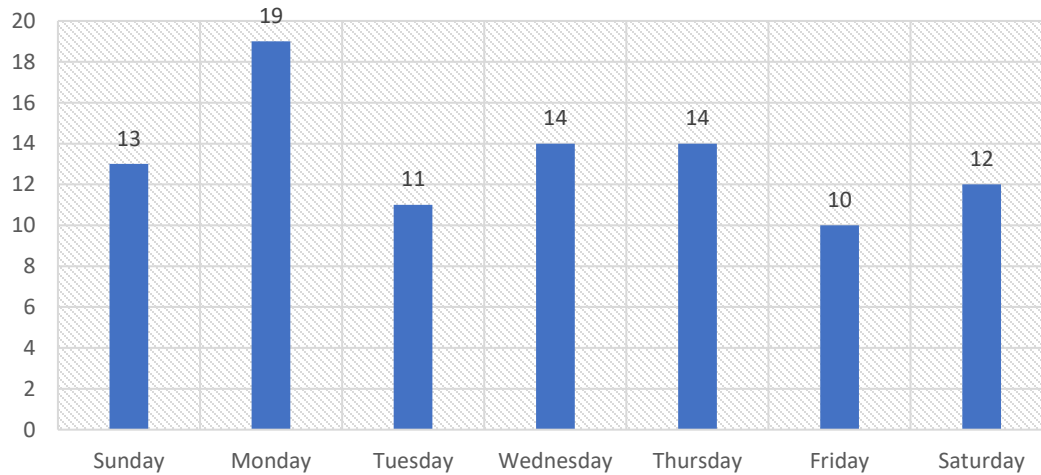
■ Transports

■ No Unit Available

### Calls by Time of Day



### Calls by Day of Week



## Dedicated Chester Unit

Row Labels	Average of Response Time
N-CHM1	0:08:17
<b>Grand Total</b>	<b>0:08:17</b>

Row Labels	Average of Response Time
Sunday	0:08:01
Monday	0:08:41
Tuesday	0:10:12
Wednesday	0:09:27
Thursday	0:08:31
Friday	0:08:33
Saturday	0:04:57
<b>Grand Total</b>	<b>0:08:17</b>

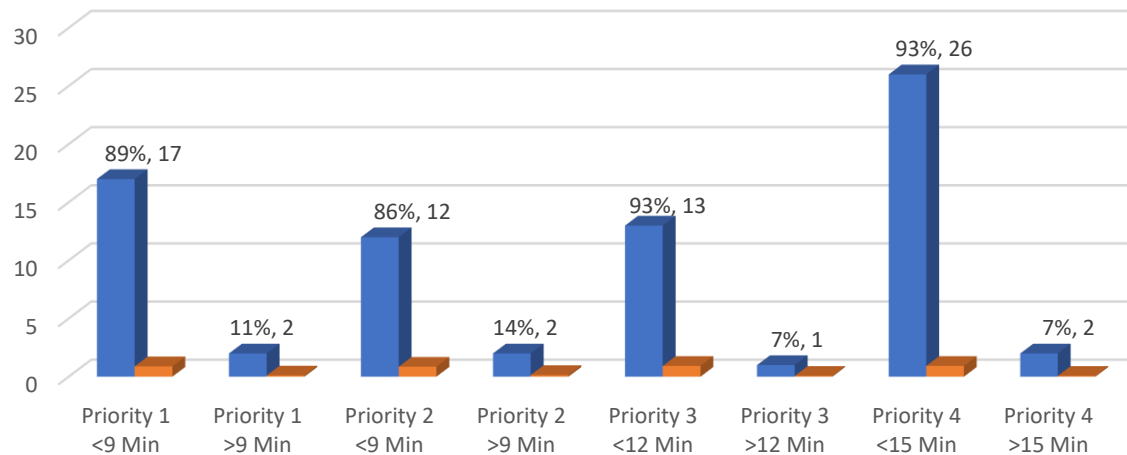
## Additional Empress Units

Row Labels	Average of Response Time
N-A705	0:17:15
355	0:11:52
N-A760	0:11:31
N-M80	0:11:11
N-A764	0:11:44
N-M764	0:20:07
N-M761	0:08:01
N-A191	0:15:12
<b>Grand Total</b>	<b>0:14:27</b>

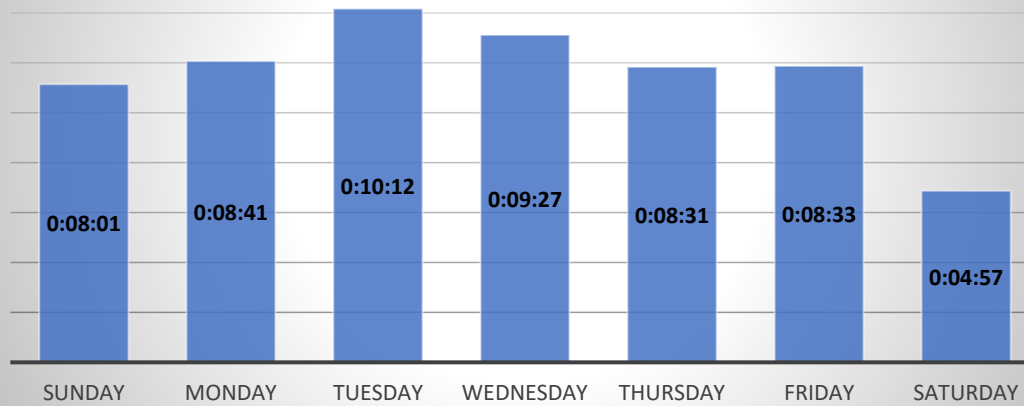
## Total All Units

Row Labels	Average of Response Time
Sunday	0:08:01
Monday	0:10:19
Tuesday	0:10:21
Wednesday	0:11:37
Thursday	0:09:00
Friday	0:08:33
Saturday	0:04:57
<b>Grand Total</b>	<b>0:09:08</b>

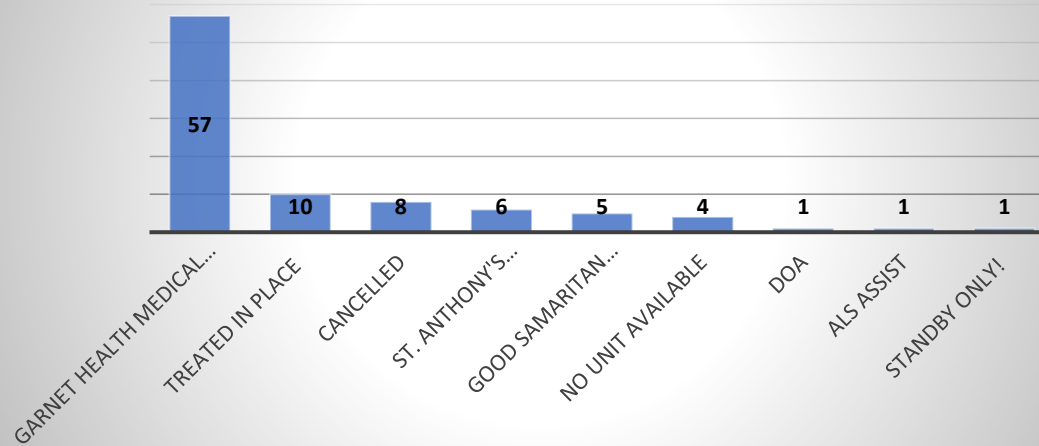
Response by Priority

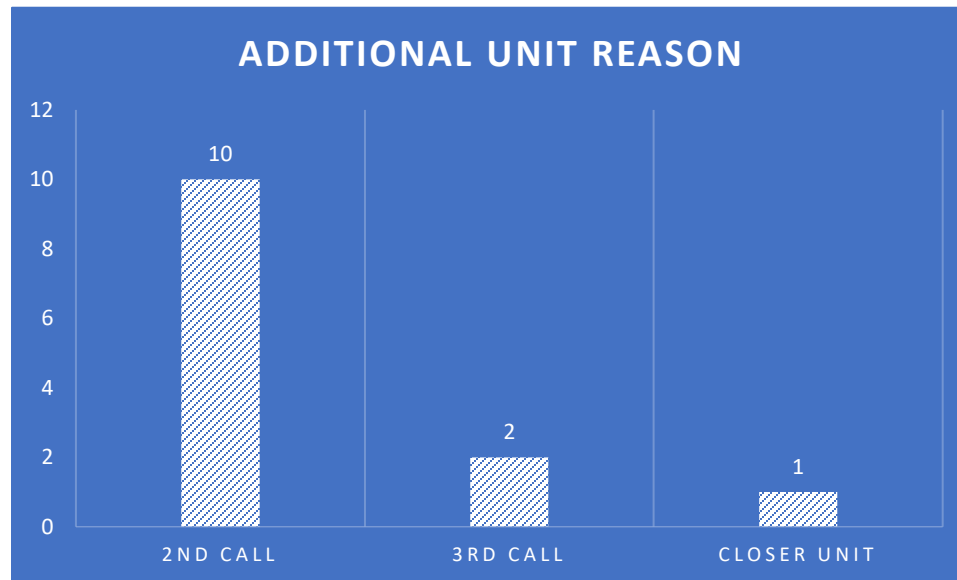
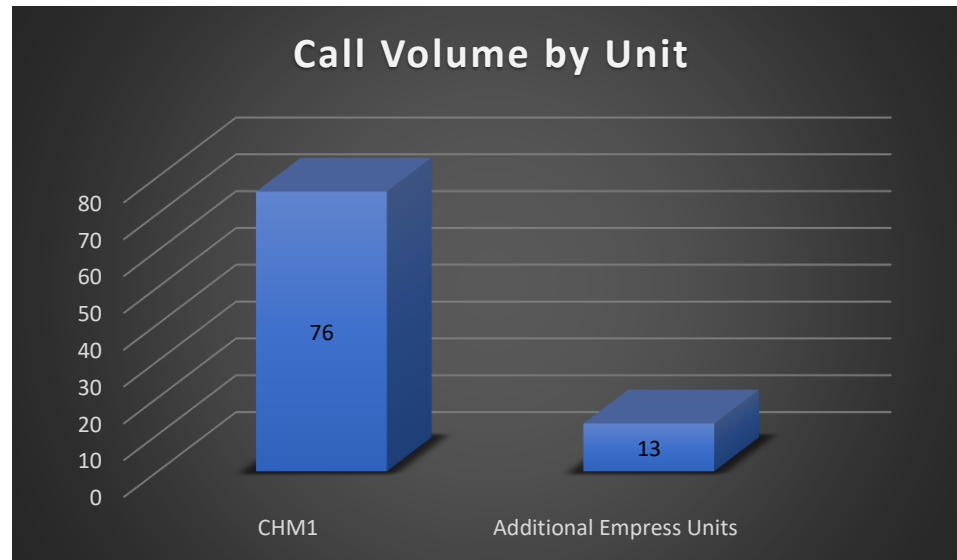


## AVG Response Time by Day of Week

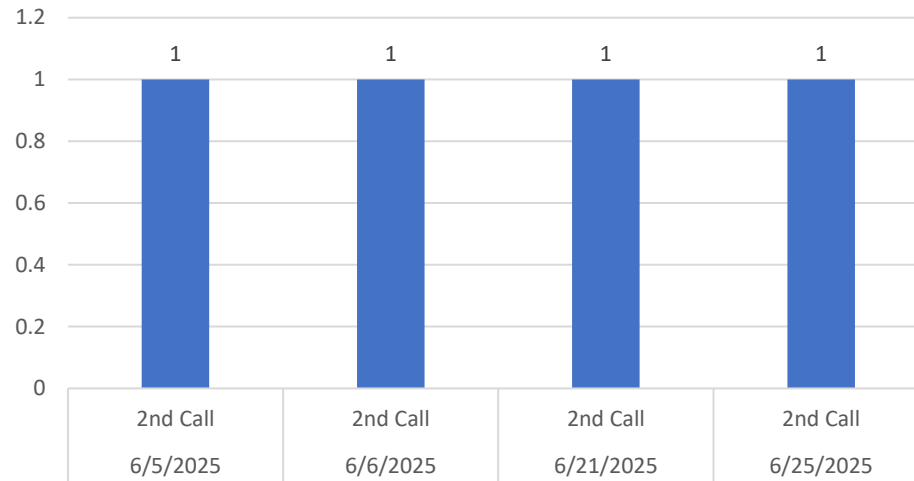


## Count of Calls by Disposition





### No Unit Available - Mutual Aid In



### Level of Service ALS 47% BLS 53%



## NATURE OF CALL

