

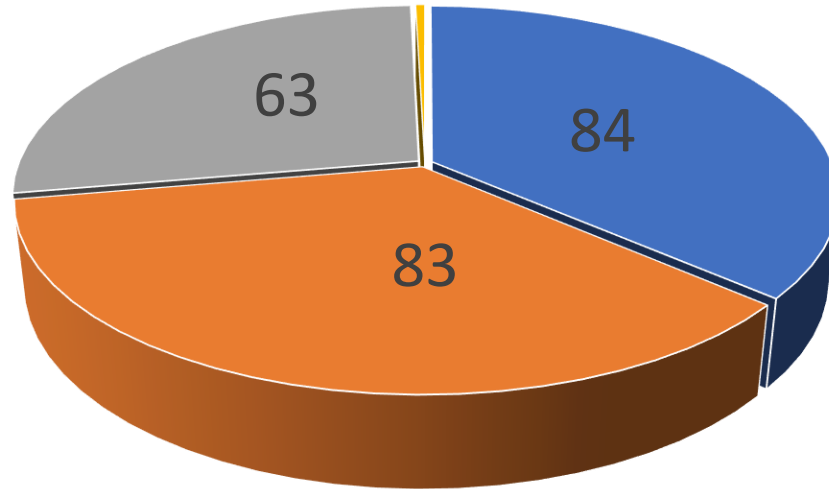


Town/Village of Chester

November 2025

Town/Village of Chester
November 2025

1, 1.2%



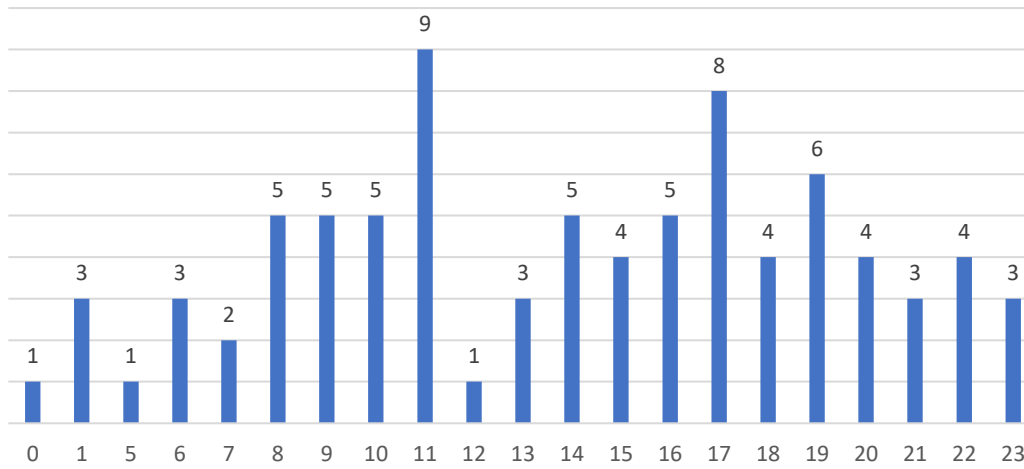
■ Total Dispatches

■ Total Responses

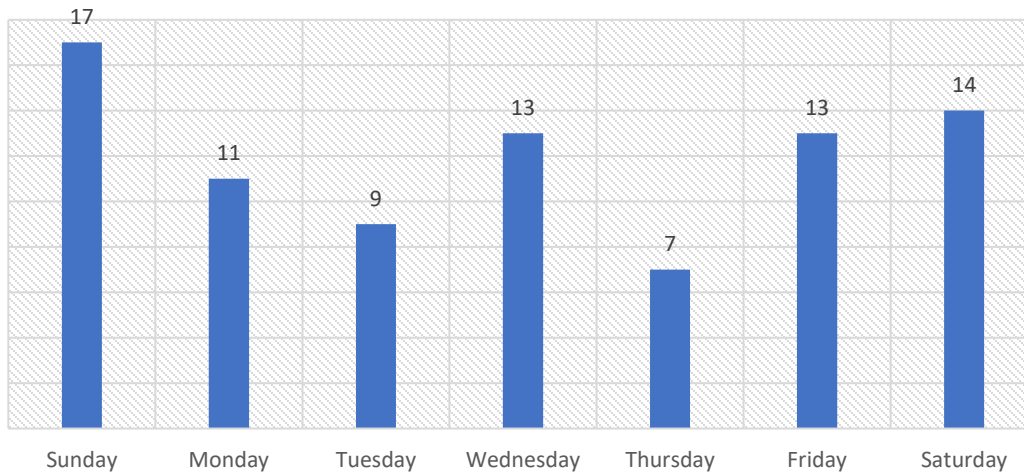
■ Transports

■ No Unit Available

Calls by Time of Day



Calls by Day of Week



Dedicated Chester Unit

Row Labels	Average of Response Time
N-CHM1	0:08:35
Grand Total	0:08:35
Row Labels	Average of Response Time
Sunday	0:08:50
Monday	0:08:18
Tuesday	0:11:08
Wednesday	0:07:28
Thursday	0:08:49
Friday	0:07:13
Saturday	0:09:26
Grand Total	0:08:35

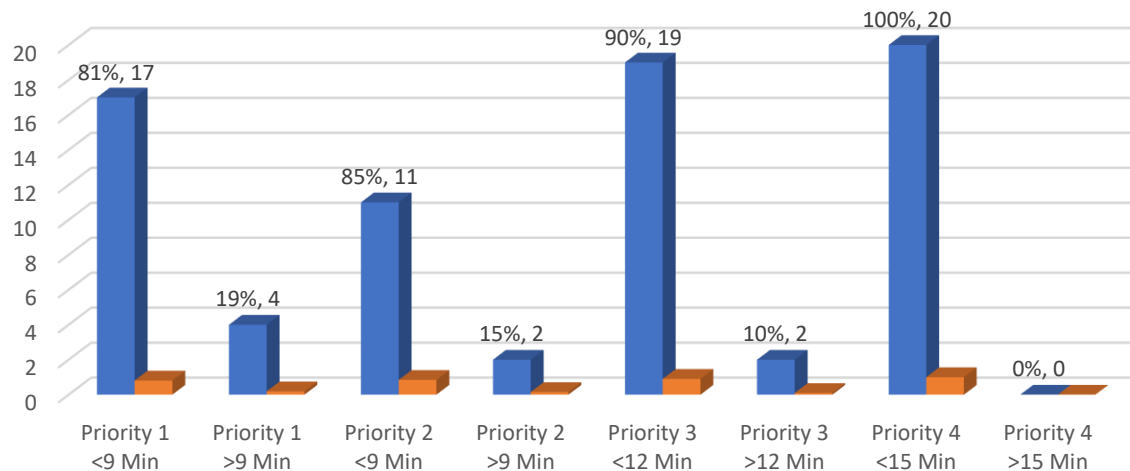
Additional Empress Units

Row Labels	Average of Response Time
N-A706	0:18:19
N-A704	0:12:56
N-M764	0:07:33
N-M80	0:17:50
N-A757	0:14:08
Grand Total	0:14:09

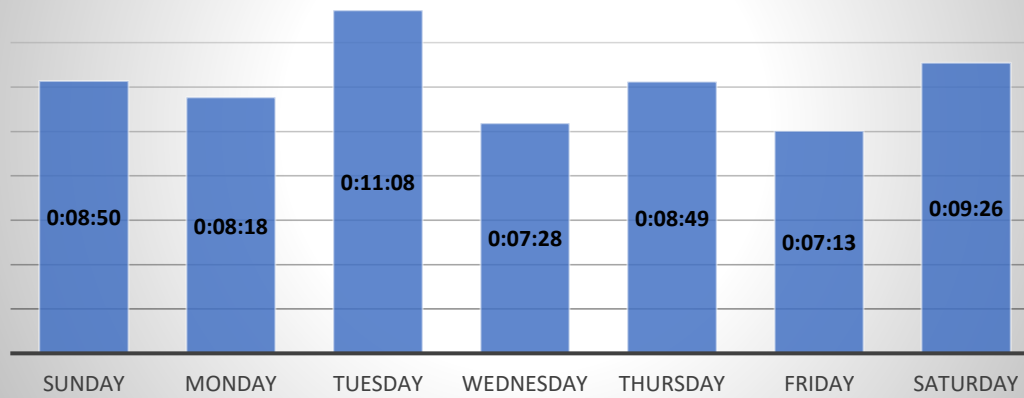
Total All Units

Row Labels	Average of Response Time
Sunday	0:09:10
Monday	0:08:18
Tuesday	0:12:52
Wednesday	0:07:28
Thursday	0:08:49
Friday	0:07:43
Saturday	0:09:26
Grand Total	0:08:56

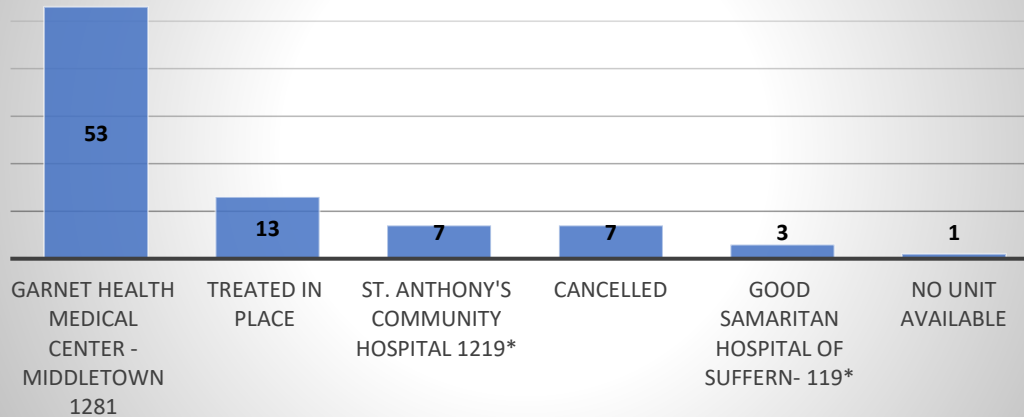
Response by Priority



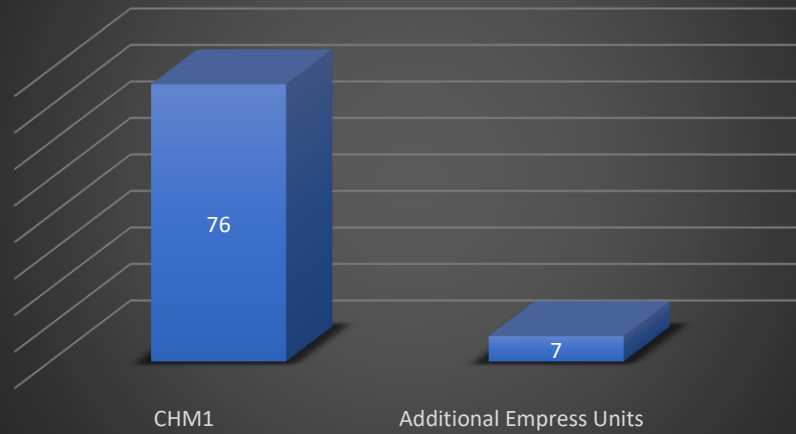
AVG Response Time by Day of Week



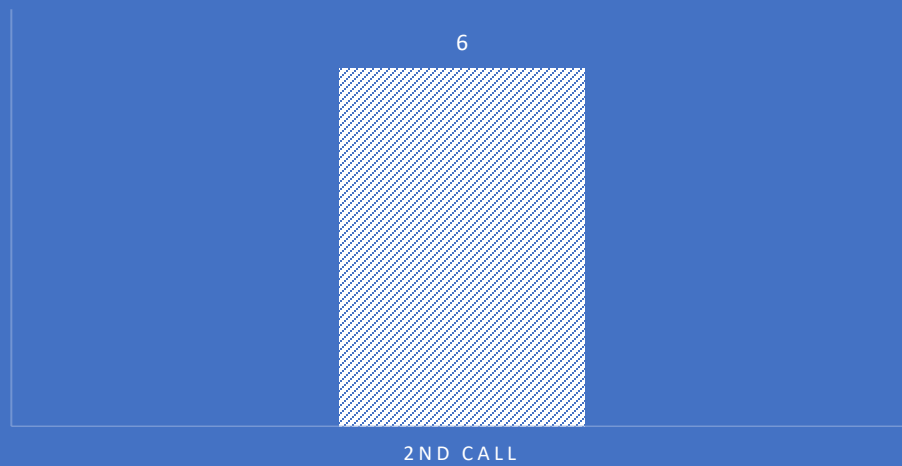
Count of Calls by Disposition



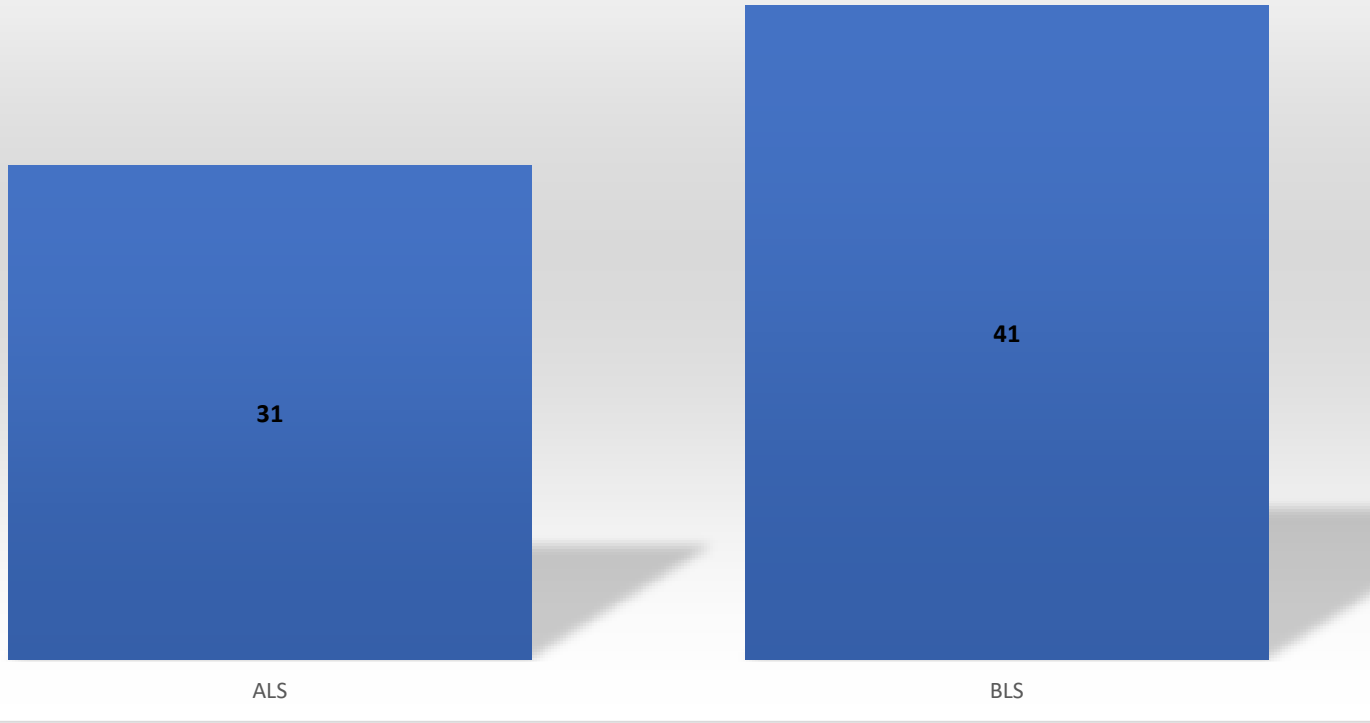
Call Volume by Unit



ADDITIONAL UNIT REASON



Level of Service
ALS 43% BLS 57%



NATURE OF CALL

