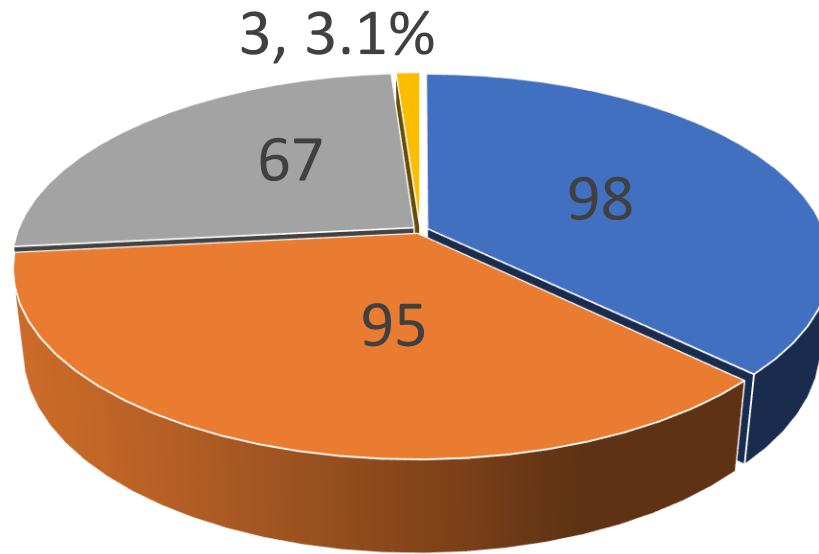




# Town/Village of Chester

## December 2025

Town/Village of Chester  
December 2025



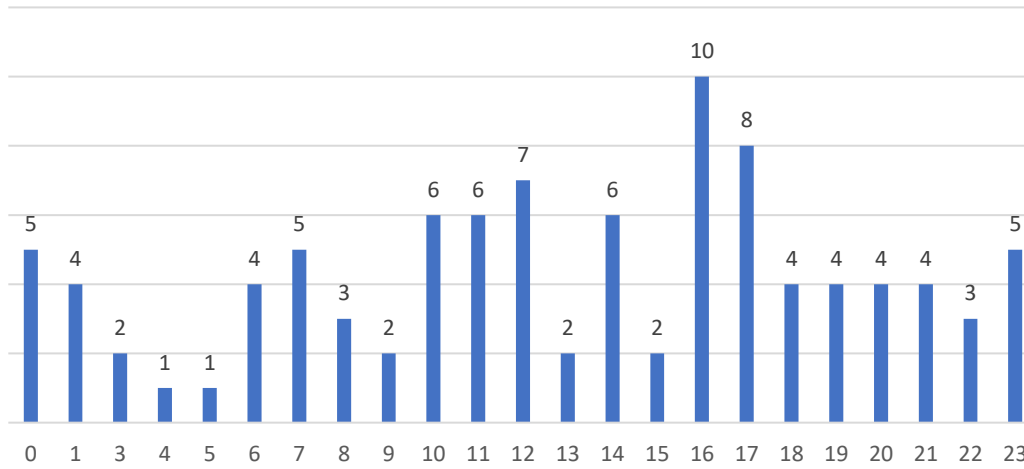
■ Total Dispatches

■ Total Responses

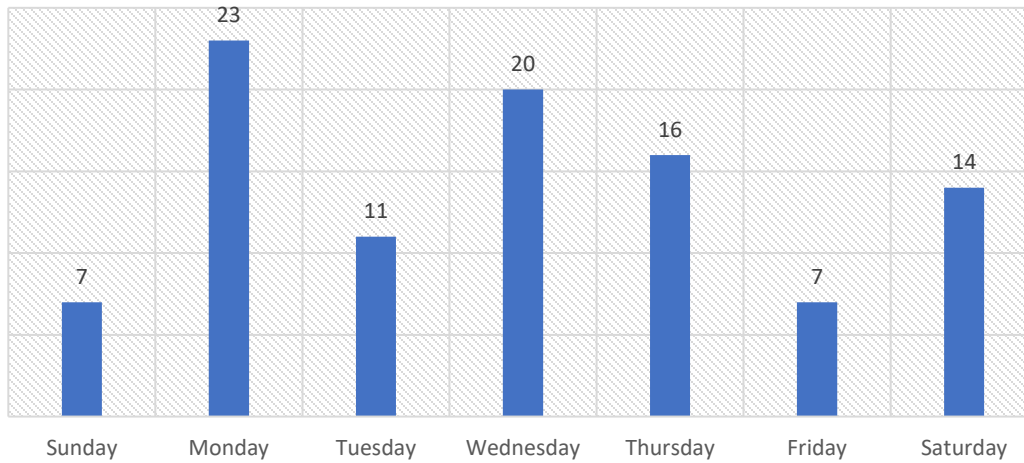
■ Transports

■ No Unit Available

### Calls by Time of Day



### Calls by Day of Week



## Dedicated Chester Unit

Row Labels	Average of Response Time
N-CHM1	0:08:04
<b>Grand Total</b>	<b>0:08:04</b>
Row Labels	Average of Response Time
Sunday	0:06:30
Monday	0:06:37
Tuesday	0:08:30
Wednesday	0:09:41
Thursday	0:07:12
Friday	0:09:47
Saturday	0:08:16
<b>Grand Total</b>	<b>0:08:04</b>

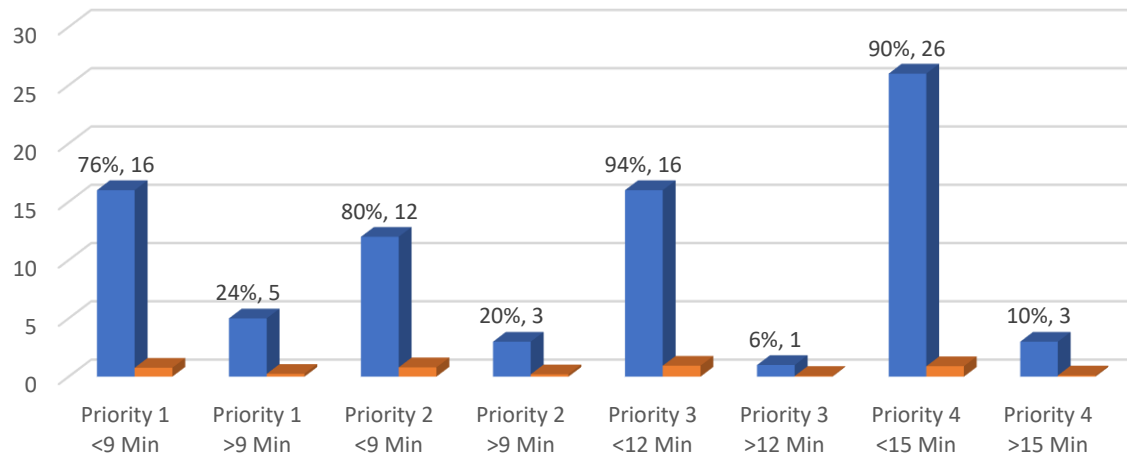
## Additional Empress Units

Row Labels	Average of Response Time
N-A710	0:04:02
N-M760	0:18:47
N-M761	0:11:24
N-M757	0:20:19
N-M764	0:12:16
<b>Grand Total</b>	<b>0:14:35</b>

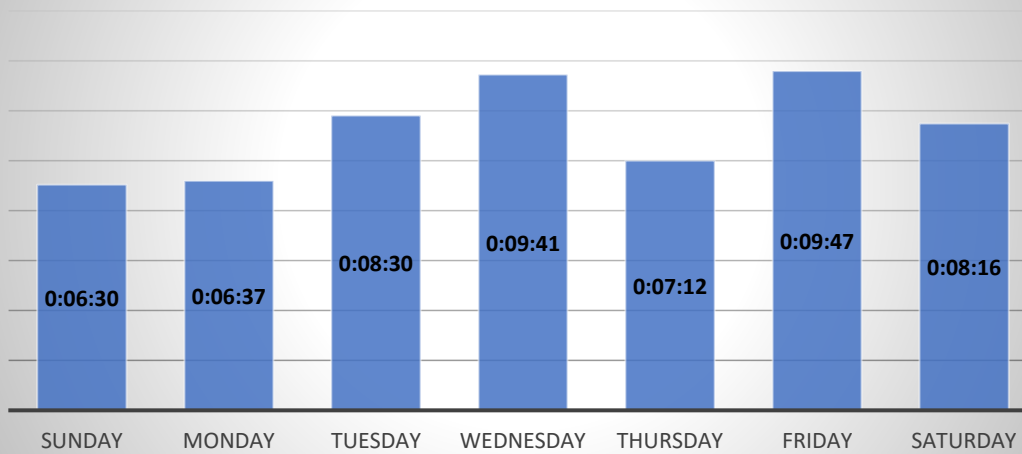
## Total All Units

Row Labels	Average of Response Time
Sunday	0:08:29
Monday	0:06:59
Tuesday	0:08:30
Wednesday	0:10:43
Thursday	0:07:29
Friday	0:11:15
Saturday	0:08:16
<b>Grand Total</b>	<b>0:08:38</b>

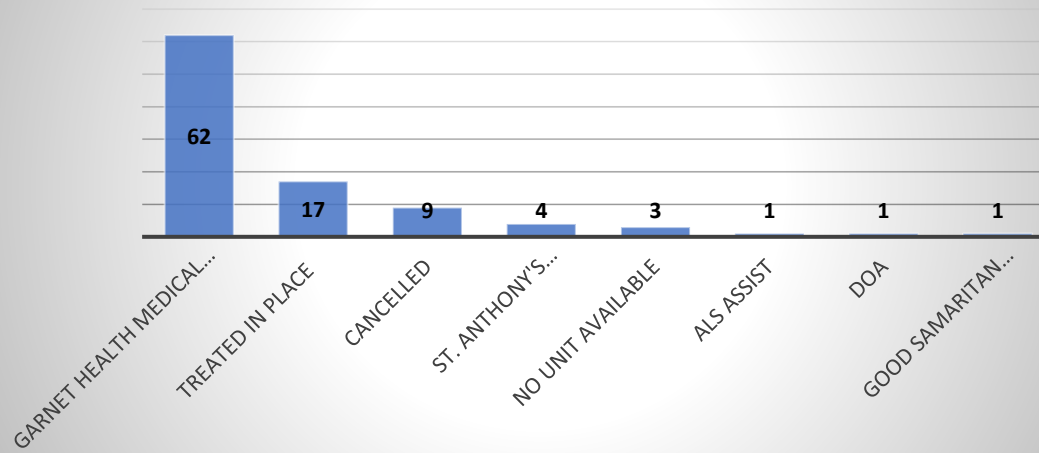
Response by Priority



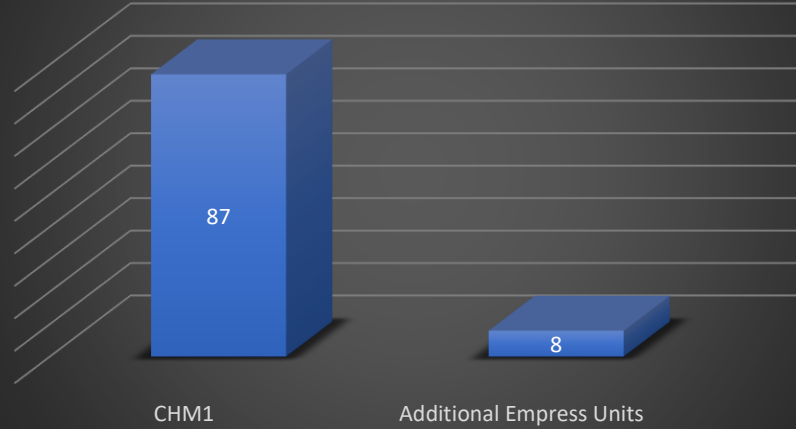
## AVG Response Time by Day of Week



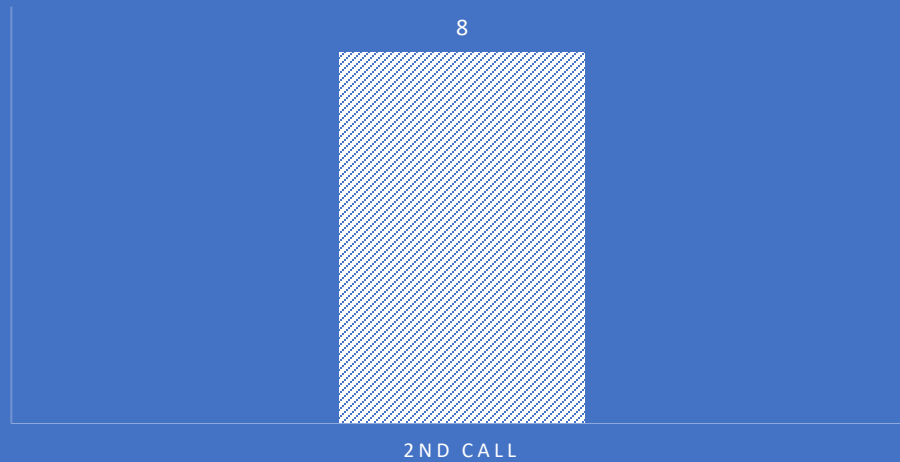
## Count of Calls by Disposition



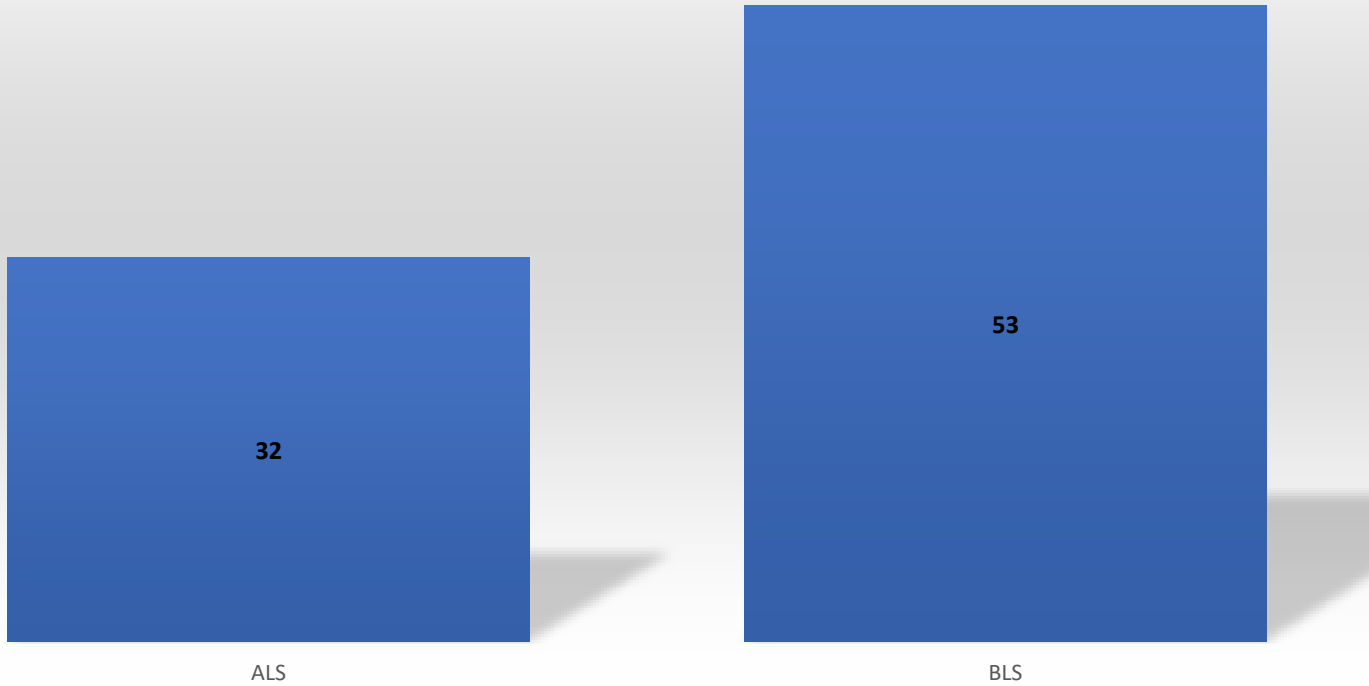
## Call Volume by Unit



## ADDITIONAL UNIT REASON



Level of Service  
ALS 38% BLS 62%



## NATURE OF CALL

