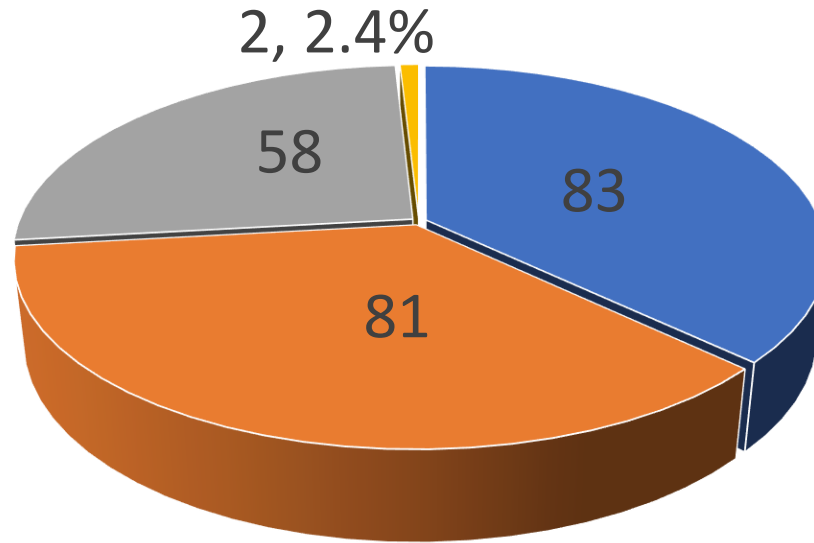




Town/Village of Chester

May 2026

Town/Village of Chester
May 2026



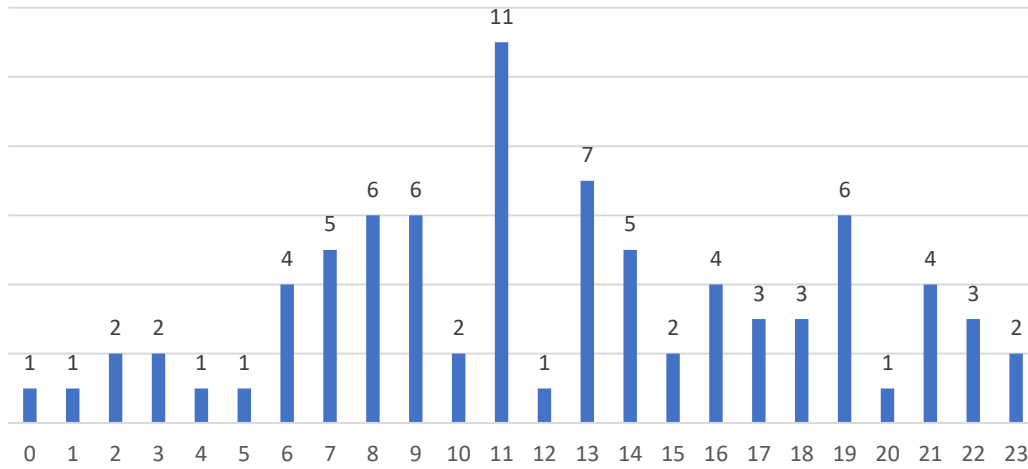
■ Total Dispatches

■ Total Responses

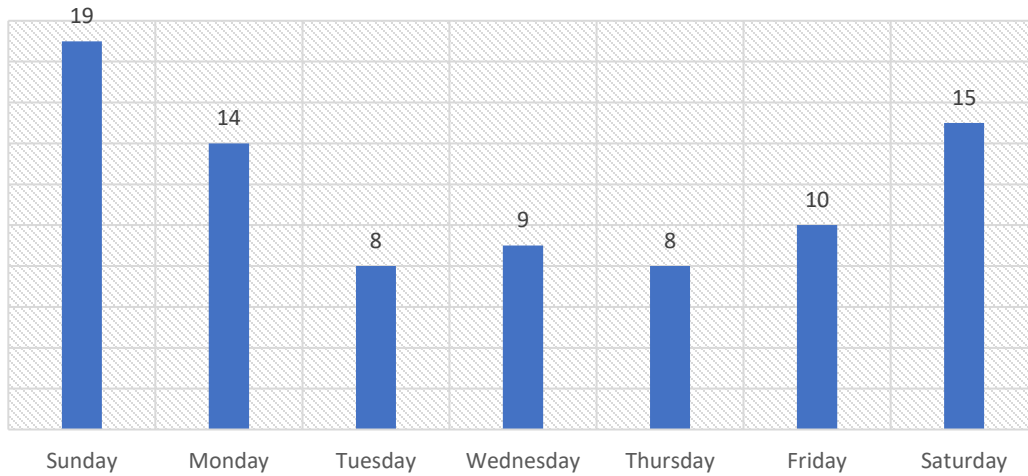
■ Transports

■ No Unit Available

Calls by Time of Day



Calls by Day of Week



Dedicated Chester Unit

Row Labels	Average of Response Time
N-CHM1	0:08:13
Grand Total	0:08:13

Row Labels	Average of Response Time
Sunday	0:08:51
Monday	0:09:11
Tuesday	0:07:32
Wednesday	0:07:07
Thursday	0:07:03
Friday	0:08:19
Saturday	0:08:20
Grand Total	0:08:13

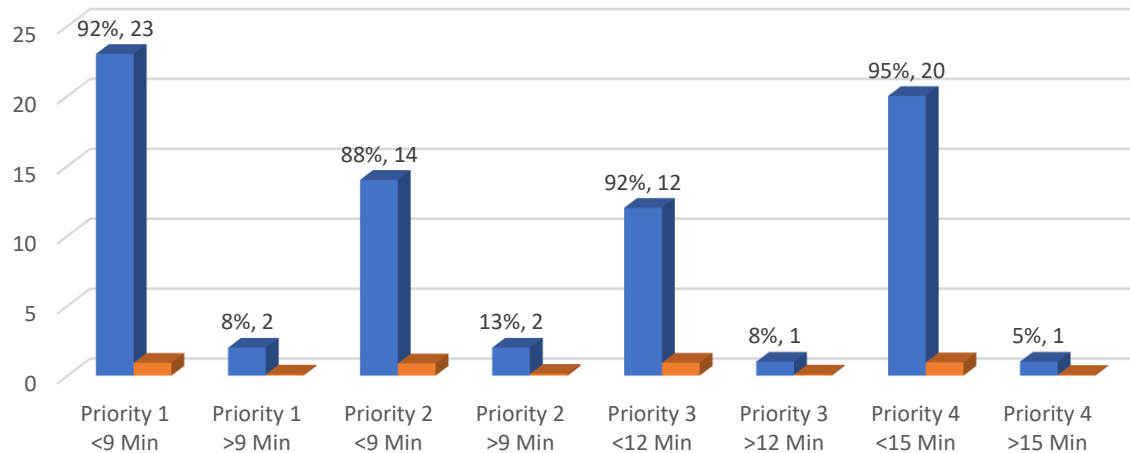
Additional Empress Units

Row Labels	Average of Response Time
355	0:02:56
N-A704	0:12:37
N-A708	0:23:39
Grand Total	0:15:06

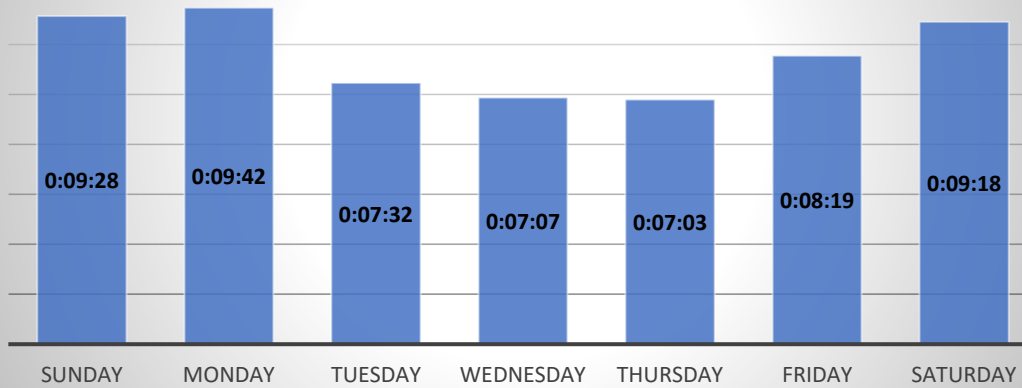
Total All Units

Row Labels	Average of Response Time
Sunday	0:09:28
Monday	0:09:42
Tuesday	0:07:32
Wednesday	0:07:07
Thursday	0:07:03
Friday	0:08:19
Saturday	0:09:18
Grand Total	0:08:40

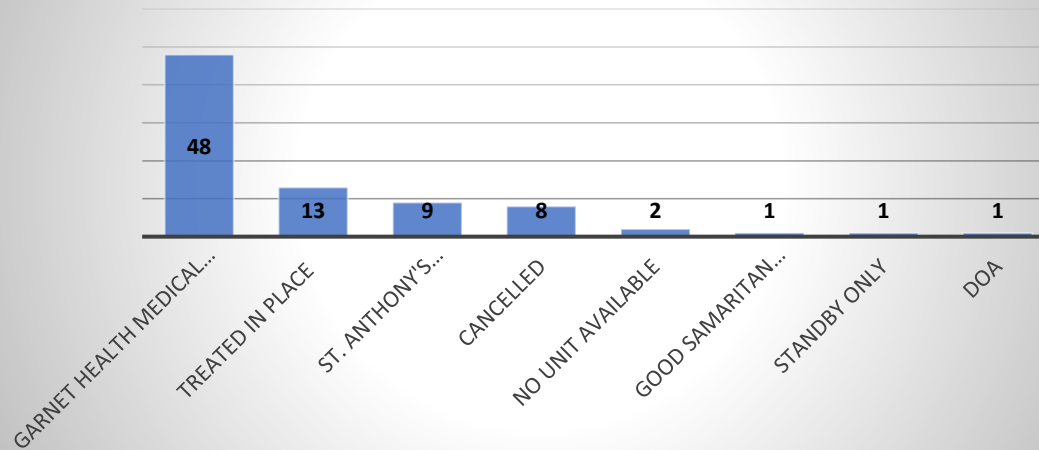
Response by Priority



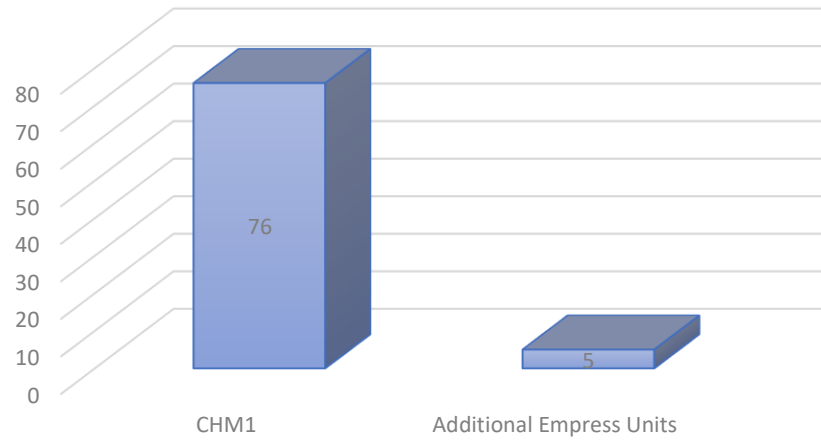
AVG Response Time by Day of Week



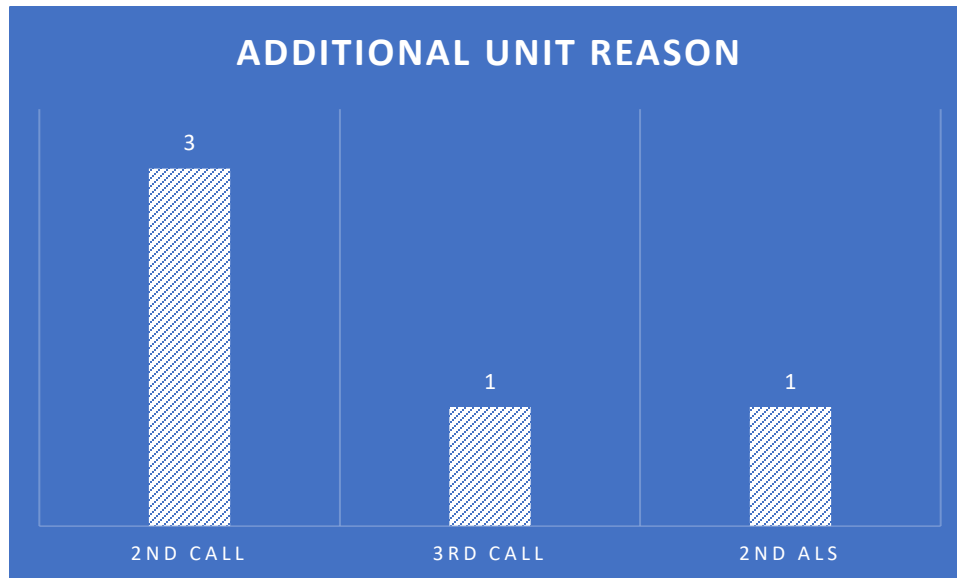
Count of Calls by Disposition



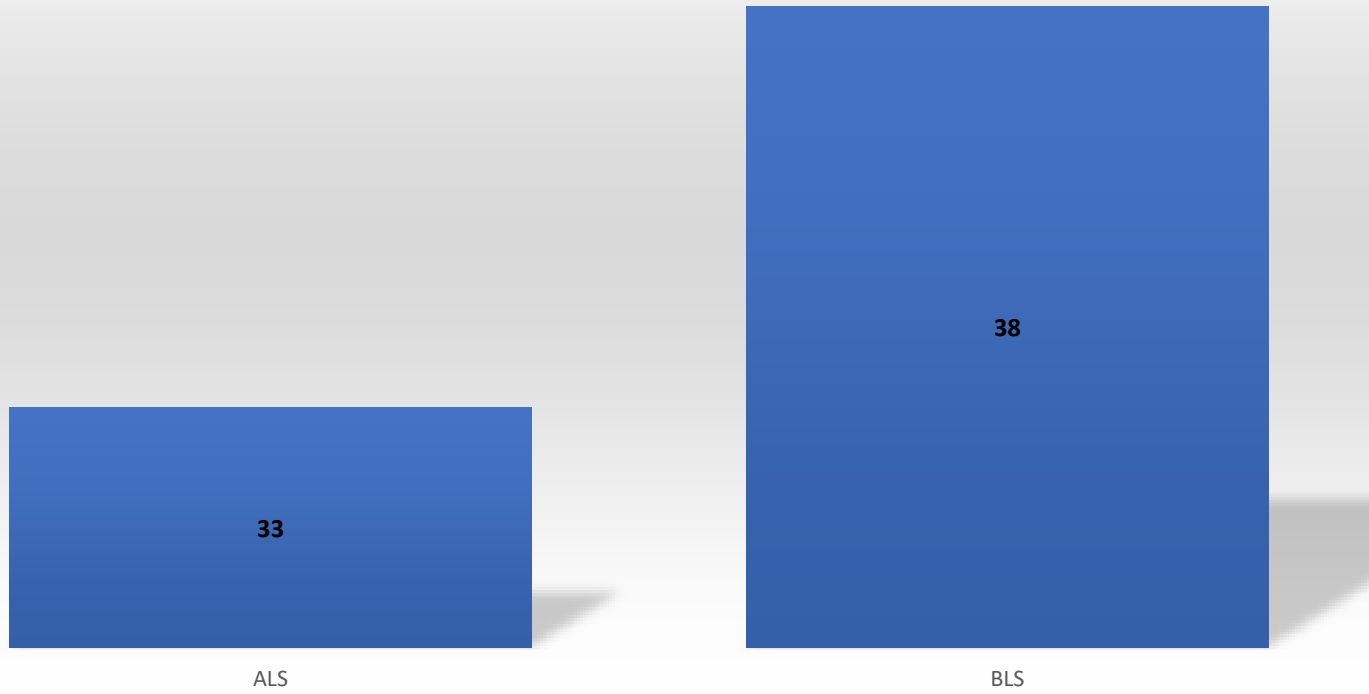
Call Volume by Unit



ADDITIONAL UNIT REASON



Level of Service
ALS 46% BLS 54%



NATURE OF CALL

